



Emergency-Brake-Switch

Kiepe NBS 500

Description

When the emergency brake switch of the type series Kiepe NBS 500 is actuated via pulling of the handle, the non-influencable triggering of an energy store follows when a pressure point has been overwon. Due to the energy store the actuation of the contacts and the interlocking are performed simultaneously. Depending on the variant, unlocking is made with a socket spanner¹⁾ or a safety key¹⁾. The pulled handle is returned by a spring in connection with the unlocking.

Lead sealing is possible. The Kiepe NBS 500 has got an add-on casing and does not require a cutout in the mounting space. The height above installation surface amounts to approx. 45 mm. If there is sufficient free space for pulling the handle, the Kiepe NBS 500 is compatible with the designs of the Kiepe NBS 200.

An inscription²⁾ can be provided on the casing.

¹⁾ Not included in scope of supply

²⁾ To be specified when ordering

Technical data

Type	Kiepe NBS 500
Rated insulations-voltage	DC 110 V +25/-30%
Ambient temperature	-25 ... +70° C
Protection type ¹⁾	IP 00
Unlocking ²⁾	Square bolt/Triangular bolt/Closing cylinder
Contacts (Change-over contact, 3 terminals)	2
Thermal current	6 A
Rated switching capacity (24 V/110 V) ³⁾	3/0,5 A
Connection	Faston plug 6,3 mm
Weight approx.	0,9 kg
Colour (red) ²⁾	RAL 3000 / RAL 3020
Operating force approx. ⁴⁾	80 N (without lead sealing)
Actuating height approx.	12 mm

¹⁾ Protection type IP 54 on request

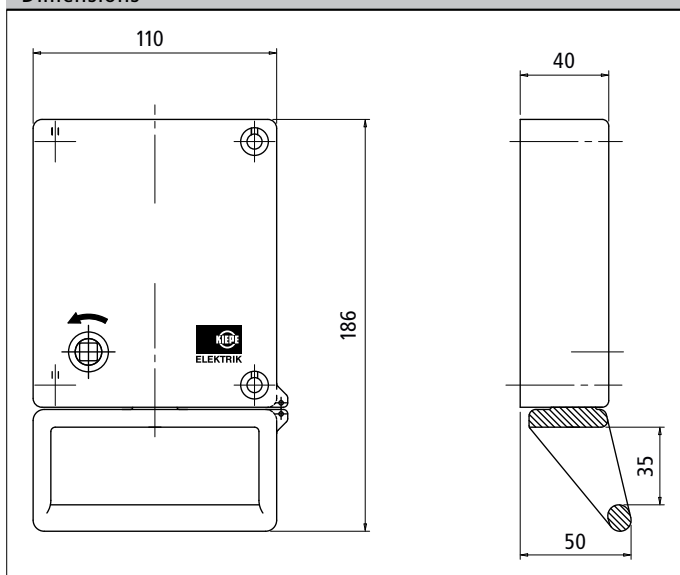
²⁾ To be specified when ordering

³⁾ Inductive load

⁴⁾ Also 100 N available

Subject to change without notice

Dimensions



For your project we recommend to take in consideration the advantageous standard component.

Standard-Part	Kiepe NBS 500
Order no.	92.049 591.304
Unlocking	Square bolt 8x8 mm
Protection type	IP 54 after installation
Colour (red)	RAL 3000
Inscription	without
Operating force approx.	100 N (without lead sealing)

Vossloh Kiepe GmbH
 Kiepe-Platz 1 · D-40599 Düsseldorf
 Telefon: +49(0)211/7497-0
 Telefax: +49(0)211/7497-300
 info@vkd.vossloh.com
 www.vossloh-kiepe.com