



# Emergency Brake Switch Kiepe NBS

for Rail Vehicles

## General

The passenger can trigger emergency braking by way of the emergency brake switch. As regards the types described below, the brake system is controlled electrically.

It is very easy to detect the emergency brake switches of the type series Kiepe NBS 200 and Kiepe NBS 500 because of their red colour and the size of the casing. They are manufactured robustly in aluminium casting.

Thanks to the way in which they are actuated – a pull at a handle – they can be distinguished clearly from other emergency actuations. To avoid action not permitted, special screws can be used optionally for the fastening. Below the most usual variants are listed. Further designs – also for pneumatic brake control – can be offered upon request.

## Kiepe NBS 200



Fig. 1 Emergency brake switch type series Kiepe NBS 200 for socket spanner

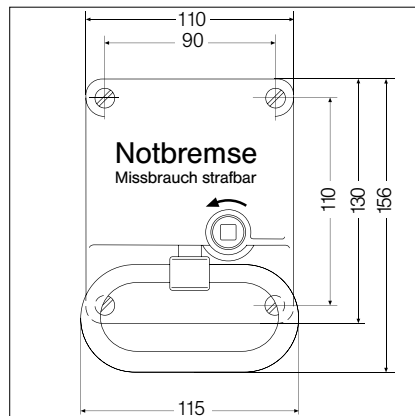


Fig. 2 Emergency brake switch type series Kiepe NBS 200 for socket spanner

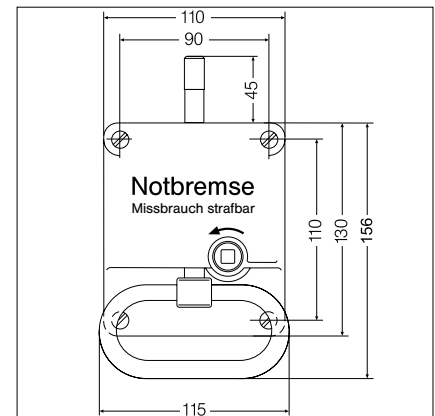


Fig. 3 Emergency brake switch type series Kiepe NBS 200 for socket spanner with locking for window breaking hammer



Fig. 4 Emergency brake switch type series Kiepe NBS 200 for safety key

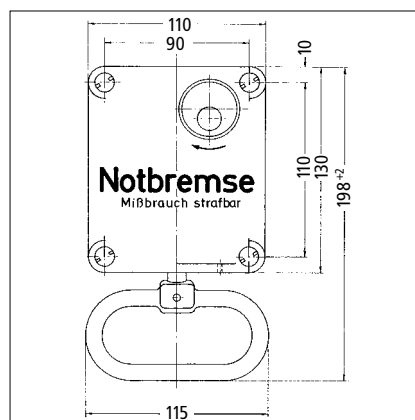


Fig. 5 Emergency brake switch type series Kiepe NBS 200 for safety key

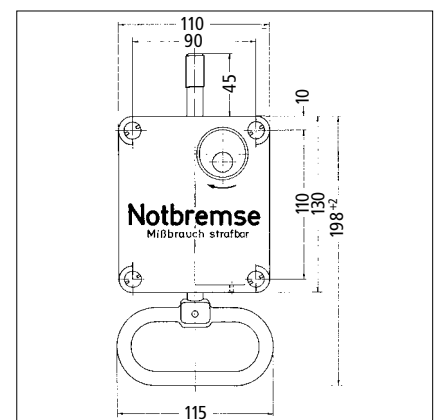


Fig. 6 Emergency brake switch type series Kiepe NBS 200 for safety key with locking for window breaking hammer

When the passenger actuates the emergency brake switch of the type series Kiepe NBS 200 by pulling the handle, he actuates the forced-opening contacts and the interlocking directly. Depending on the design, unlocking is made with a socket spanner<sup>1)</sup> or a safety key<sup>1)</sup>. The socket spanner version and the safety key version have got the same mounting dimensions, but they do not need the same free space for the handle.

The pulled handle is to be pushed back manually in connection with the unlocking.

A variant is available without interlocking and with reset through the force of a spring.

The Kiepe NBS 200 does not have an add-on casing, and it is therefore necessary to make a cutout in the mounting space. The needed mounting depth amounts to approx. 25 mm for one switching element and to approx. 50 mm for two switching elements. Alternatively, a suitable add-on casing can be delivered as accessory.

Some variants of the type series Kiepe NBS 200 have got an extended actuating rod, which makes it possible to lock a window breaking hammer<sup>1)</sup> so that it can only be removed from its holding fixture when the emergency brake switch is actuated.

The casing is provided with the inscription "Notbremse-Mißbrauch strafbar". If the emergency brake switch is to be applied out of Germany or if it is desired, the casing can be provided with another inscription.

<sup>1)</sup> Not included in scope of supply

## Kiepe NBS 500



Fig. 7 Emergency brake switch type series Kiepe NBS 500

When the emergency brake switch of the type series Kiepe NBS 500 is actuated via pulling of the handle, the non-influenceable triggering of an energy store follows when a pressure point has been overwon. Due to the energy store the actuation

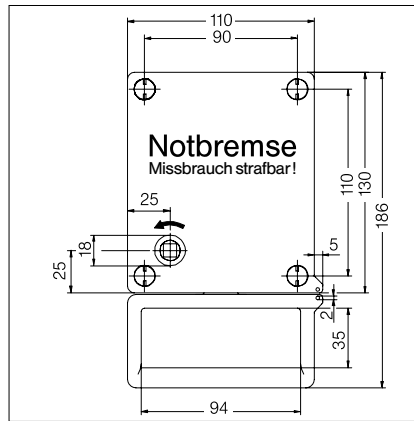


Fig. 8 Emergency brake switch type series Kiepe NBS 500

of the contacts and the interlocking are performed simultaneously.

Depending on the variant, unlocking is made with a socket spanner<sup>1)</sup> or a safety key<sup>1)</sup>. The pulled handle is returned by a spring in connection with the unlocking.

The Kiepe NBS 500 has got an add-on casing and does not require a cutout in the mounting space. The mounting height amounts to approx. 45 mm. If there is sufficient free space for pulling the handle, the Kiepe NBS 500 is compatible with the designs of the Kiepe NBS 200.

NBS 500 is also available with protection degree IP 54.

The casing is provided with the inscription "Notbremse-Missbrauch strafbar". If the emergency brake switch is to be applied out of Germany or if it is desired, the casing can be provided with another inscription.

<sup>1)</sup> Not included in scope of supply

## Kiepe NBS 550



Fig. 9 Emergency brake switch Kiepe NBS 550

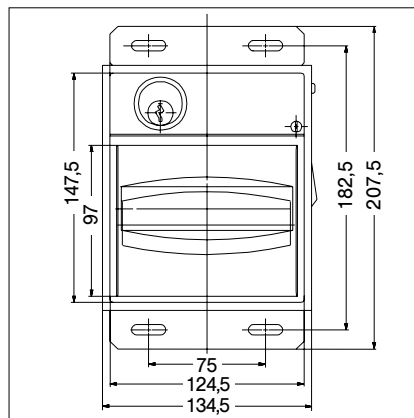


Fig. 10 Emergency brake switch Kiepe NBS 550

The emergency brake switch Kiepe NBS 550 has got the same actuating mechanism as the Kiepe NBS 500. However, it is so designed that its handle lies in a depression. Thus, it can be fitted flushly if the wall for the fitting has got a sufficient depth (approx. 80 mm). Depending on the variant unlocking is made with a socket spanner or a safety key. This type of emergency brake switch cannot be provided with a direct inscription, but only with an inscription plate<sup>1)</sup> near the visible handle.

<sup>1)</sup> Not included in scope of supply

## Kiepe NBS 900



Fig. 11 Emergency brake switch type series Kiepe NBS 900 (Example of installation)

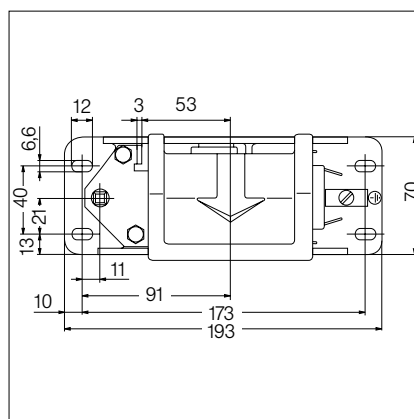


Fig. 12 Emergency brake switch type series Kiepe NBS 900

The emergency brake switch of the type series Kiepe NBS 900 is equipped with an actuating mechanism similar to that of the Kiepe NBS 500. It is fitted on an open base plate to be fixed behind a mounting space (mounting depth approx. 30 mm). Only the handle is visible in the passenger compartment.

This type of emergency brake switch cannot be provided with a direct inscription, but only with an inscription plate<sup>1)</sup> near the visible handle.

<sup>1)</sup> Not included in scope of supply

Technical data		Selection table									
Type Series Kiepe NBS		500			200				550	900	
Variants		1	2	3	4	5	6	7	8	9	10
Rated insulation-Voltage DC	[V]	110									
Ambient temperature	[°C]	-25... +70									
Protection type		7)	IP 00								
Unlocking											
- Square bolt	[mm x mm]	8x8			8x8	8x8					8x8
- Triangular bolt <sup>1)</sup>	[mm]		7,5				7,5				
- Closing cylinder <sup>2)</sup>				•				•	•	•	
Contacts											
- Change-over contact (with 3 connectors)		2	2	2						2	1
- 1NO 1NC					2	1	1	2	1		
Thermal current	[A]	6	6	6	16	16	16	16	16	10	10
Rated switching capacity <sup>3)</sup>											
- Inductive load <sup>3)</sup> DC 24V	[A]	3	3	3	2,1	2,1	2,1	2,1	2,1	8	8
- Inductive load <sup>3)</sup> DC 110V	[A]	0,5	0,5	0,5	1,1	1,1	1,1	1,1	1,1	0,4	0,4
Connection											
- Faston plug 6,3 mm		•	•	•	•	•	•			•	•
- Screw M 3,5								•	•		
Weight approx.	[kg]	0,9	0,9	0,9	1	1	1	1	1	1,3	0,9
Colour	[RAL]	3000	3000	3000	3002	3002	3002	3002	3002	020/4050 <sup>4)</sup>	3000 <sup>4)</sup>
Operating force <sup>5)</sup> approx.	[N]	80 <sup>6)</sup>	80	80	75	75	75	75	75	80	110
Actuating height approx.	[mm]	12	12	12	18	18	18	18	18	8	15
Locking window breaking hammer						•	•		•		
Dimensions / Fig.		8/7	8/7	8/7	2/1	3/3	3/3	5/4	6/6	10/9	12/11

1) Height of the triangle 2) Indicate when ordering 3) L/R on demand 4) Colour of handle 5) Without plumbing 6) Also available with 100N

7) Also available with IP 54

Subject to change without notice.

Vossloh Kiepe GmbH  
 Kiepe-Platz 1 • D-40599 Düsseldorf  
 Telefon: +49(0)211/7497-0  
 Telefax: +49(0)211/7497-300  
 www.vossloh-kiepe.com